



Support Designated ELD instruction with Lexia® English Language Development™

California school districts and county offices of education are required to provide Designated ELD (English Language Development) instruction—focused instruction on the state-adopted ELD standards during a protected time in the regular school day.

Using Lexia English to support Designated ELD instruction provides targeted speaking and listening practice to ensure Emergent Bilingual students develop the critical English language skills, knowledge, and abilities needed for content learning in English.

Essential Features of Designated ELD Instruction ¹	English Language Development With Lexia English Provides:
English Learners actively engaged in collaborative discussions to build awareness of language and develop skills to use language ¹	Opportunities for oral language development through collaborative discussions, academic conversations, and interactive English speaking and listening practice
Specialized attention to the language learning needs of English Learners at all proficiency levels ¹	Instruction directly correlated to the CA ELD Proficiency Levels; individualized instruction that combines independent, student-driven learning with targeted, teacher-led lessons
Lessons designed using the CA ELD Standards ¹	Instruction aligned to the CA ELD Standards, including real-time progress monitoring that is aligned to the CA ELD Proficiency Levels and predictive of ELPAC achievement
Focus on academic English and literacy in the content areas ¹	Support of English language acquisition through academic conversations in the subjects of math, science, social studies, general knowledge, and biographies
Focus on discourse practices, grammatical structures, and vocabulary ¹	Advanced technology in speech recognition to support interactive academic English speaking, listening, and grammar practice in a variety of subject areas
Instruction that is intellectually motivating, challenging, purposeful, meaningful, and based on individual needs ¹	Culturally responsive pedagogies that affirm learners of all backgrounds; individualized learning paths for each student; motivation through choice and celebrating students' progress

Because it aligns instruction to the CA ELD Standards, **Lexia English may be utilized as a supplemental instructional material not adopted by the State Board of Education.**²

¹ English Language Arts/English Language Development Framework (ELA/ELD Framework);

Chapter 2: Key Considerations in the ELA/Literacy and ELD Curriculum, Instruction, and Assessment

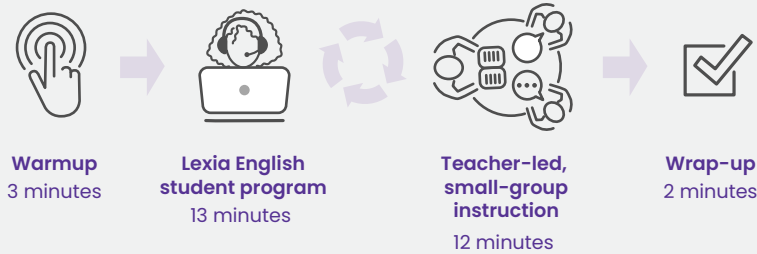
² Instructional Materials Implementation: Implementation of Instructional Materials Not Adopted by California; California Education Code (EC) Section 60210

Lexia English fits into your existing Designated ELD instructional block

These implementations assume a 30-minute period, five days a week. A customer success manager can help create a schedule for an alternative implementation model for Designated ELD instruction if needed.

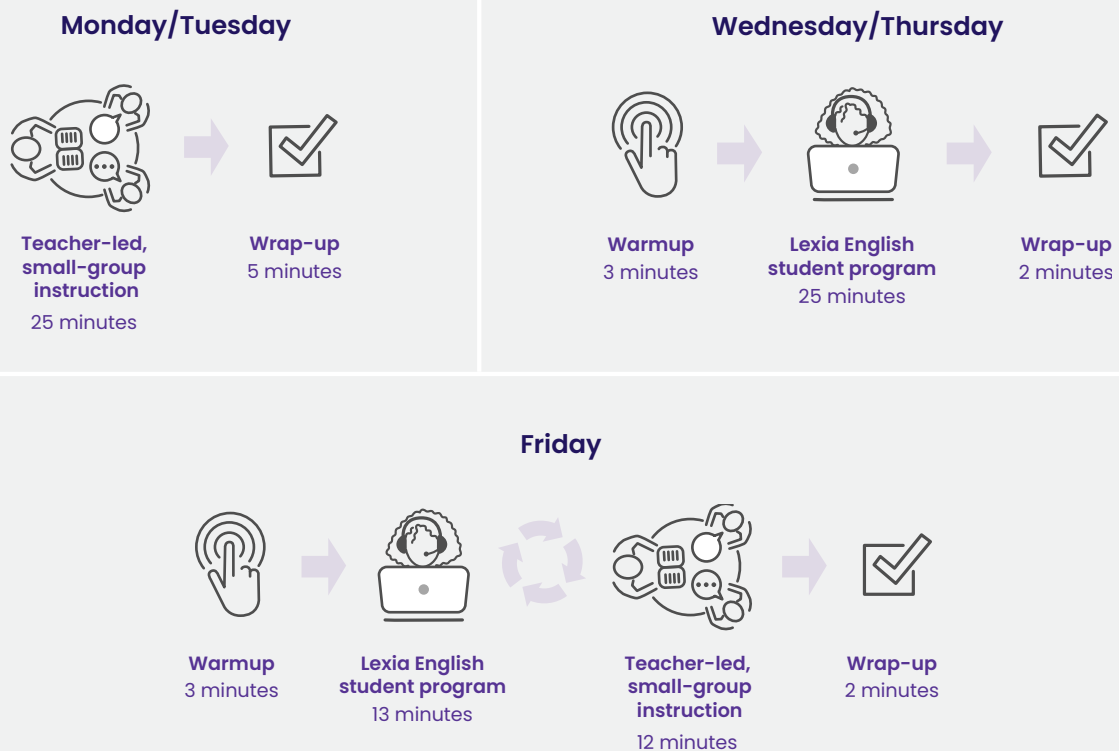
OPTION A

In this model, a group of students will work independently in the Lexia English student program, while the teacher works with the rest of the students using the teacher-led Lexia Lessons®. The groups will rotate, allowing the teacher to work with all the students as needed throughout the week using the program's handy grouping recommendations for small-group instruction.



OPTION B

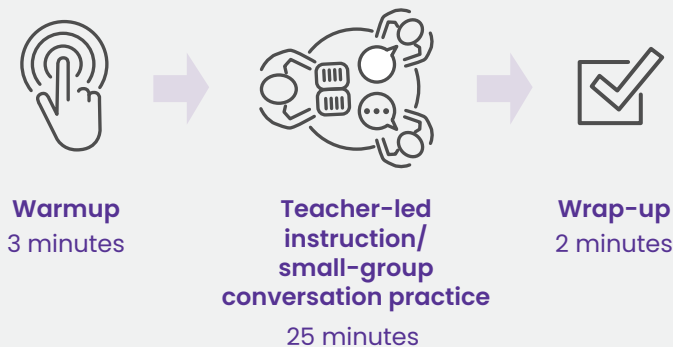
In this model, the teacher will front-load the skills for the week through teacher-led Lexia Lessons on Monday and Tuesday. During the rest of the week, the students will work independently in the Lexia English student program while the teacher monitors and utilizes the data to plan additional small-group instruction on Friday or for the following week.



OPTION C

For school districts that implement an extended learning model, Emergent Bilingual students will work with their teacher using the Lexia Lessons for Speaking Practice, Lexia Lessons for Listening Practice, and Lexia Skill Builders® during daily Designated ELD instruction. During extended learning opportunities before or after school, students will work independently on the online Lexia English student program. The teacher will monitor and utilize the data obtained during extended learning to plan for targeted daily Designated ELD instruction.

Designated ELD Instruction 30 minutes / 5 days per week



Before/After-School Extended Learning 25 minutes / 3 days per week

