

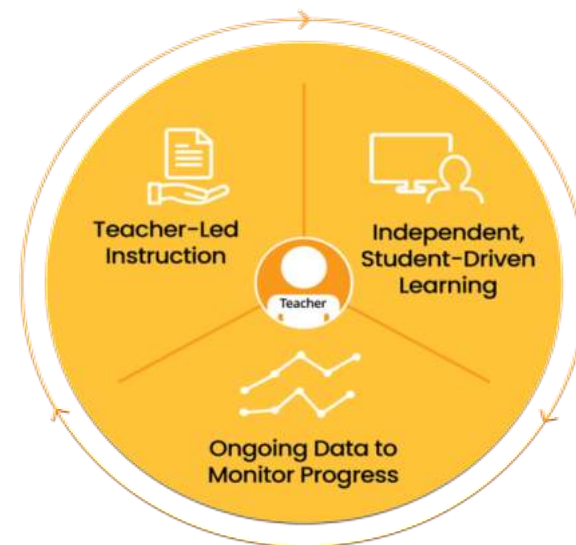
Lexia® English Language Development™

Oregon’s Early Literacy Framework

Lexia® English Language Development™ is an adaptive blended learning, speaking, and listening program that supports students’ English language development through academic conversations via online and teacher-led offline instruction. Lexia English is uniquely suited to support the Oregon’s Early Literacy Framework by providing students in grades K-5 with an engaging, individualized approach to improve language proficiency. It integrates speaking, listening, and grammar, while emphasizing the language of content in Math, Science, Social Studies, General Knowledge, and Biographies.

The Oregon Early Literacy Framework consists of eight sections that ***“work in reciprocity with one another to help reinforce culturally responsive practice and reading science as fundamental to children’s literacy and multilingual development.”*** This framework aims to be a primary resource or mentor text for K-5 classroom teachers, school leaders, and everyone committed to seeing literacy learning maximized for every student through high-quality instruction. Oregon’s Early Literacy Framework:

- Builds momentum and capacity for strengthening belonging and literacy instruction in every elementary classroom;
- Enables children to leave elementary school proficient in reading and writing in one or more languages, with as many opportunities to build on their funds of knowledge in additional languages as possible; and
- Speaks to the comprehensive nature of literacy instruction.



Lexia English & Oregon’s Early Literacy Framework

This document provides an overview of how Lexia English addresses the guidelines outlined in the Oregon Department of Education’s Early Literacy Framework. Evaluators are encouraged to consult the program’s Scope and Sequence and demo pathways for a deeper understanding of instructional practices. The table below highlights aspects of Lexia English that address the eight sections of the framework.

Oregon’s Framework	How Lexia English Addresses the Framework
<p>Section 1:</p> <p>Student Belonging: A Necessary Condition for Literacy Learning</p>	<p>Lexia English embraces culturally responsive pedagogy that leverages culture in curricular and instructional planning. This pedagogy engages students, promotes ownership of learning, and celebrates student experiences. Lexia English...</p> <ul style="list-style-type: none"> • Designs culturally responsive and sustaining pedagogy that provide opportunities to relate learning to students and allow them to share their lived experiences • Encourages classroom conversations to always be conducted in a safe learning environment • Leverages the diverse cultures and identities of all learners as tools to support academic achievement and as avenues that can inspire and support a sense of belonging • Embraces linguistic differences, such as accent variation, and regards them as critical resources to help learners reach their full potential and enrich the world • Supports student’s agency and growth mindset, giving students a choice over their pace through the program, along with awareness and ownership of performance and progress • Builds cultural awareness through diverse text by addressing the experiences of diverse populations • Interweaves strategies for building social emotional learning (SEL) and literacy by providing an environment of encouragement with an understanding that learning is ongoing and giving students a safe place to try, fail, and retry



Oregon's Framework	How Lexia English Addresses the Framework
<p>Section 2: Family & Community Partnerships</p>	<p>Lexia English believes in and supports a strong and fluid relationship between home and school. Lexia English...</p> <ul style="list-style-type: none"> • Positions families and guardians as integral partners that are essential to learners' academic and socioemotional success • Offers students and their families a variety of resources to support learners' achievement and ongoing learning, such as translated parent letters • Builds a bridge between school and home with these resources
<p>Section 3: Oral Language as the Root of Literacy Development</p>	<p>Employing both expressive and receptive language, Lexia English provides multilingual learners with personalized oral language practice. Lexia English allows learners to achieve fluency and automaticity with the English language. This includes...</p> <ul style="list-style-type: none"> • Allowing for personalized interactions and conversations through purposeful repetition, offering students ample opportunities to practice in a non-judgmental setting • Focusing on language frames in which students learn about the semantics of English grammar • Skill Builders lessons which are based on presentations, enriching students' oral language development by engaging them with academic, personal, and culturally-relevant content through writing, oral expression, and peer assessment • The characters in Lexia English who are all multilingual and represent the top 13 languages spoken in the United States; all 17 characters have a different home language and most of them have accents like all speakers of English • Lexia English's motto, "Multilingualism is a superpower"

Oregon's Framework	How Lexia English Addresses the Framework
<p>Section 4: Reading Models Based in Research</p>	<p>Lexia English is based on the science of language acquisition. It draws on multiple disciplines to create powerful instructional models that are valuable for all students which are critical to ensure educational equity for multilingual learners. Lexia English...</p> <ul style="list-style-type: none"> • Draws upon research supporting best practices around language acquisition, such as the following theories: natural approach, interaction hypothesis, output hypothesis, corrective feedback, and functions of language • Creates activities to support and work in tandem with the foundational skills of reading and writing • Positions listening and speaking skills and comprehension strategies as pillars of learning to support reading and writing • Provides students the opportunity to practice text-comprehension skills and strategies • Elicits verbal reasoning through the comprehension skill and strategy assigned to each online encounter and teacher-led lesson • Features writing activities to further enhance the relationship between written expression and text comprehension • Provides substantial grounding for culturally responsive practice as an influencing factor in learning to read and write

Oregon's Framework	How Lexia English Addresses the Framework
<p>Section 5: Foundational Skills</p>	<p>Oral language is foundational to language development. As such, Lexia English...</p> <ul style="list-style-type: none"> • Builds upon the student's home language and diverse linguistic repertoire • Supports reading and writing through oral language, which is the foundation for word reading and comprehension • Provides a strong foundation of oral language development to support multilingual learners to reach higher levels of English reading fluency • Employs language frames that are introduced via the gradual release format: I do, We do, You do • Teaches language structures and syntax via language frames associated with each online encounter and teacher-led lessons • Increases language comprehension and background knowledge through exposure to a variety of texts and classroom conversations (whole-group, small-group, and peer-to-peer)
<p>Section 6: Writing, Reading Comprehension, Vocabulary, & Background Knowledge</p>	<p>Lexia English helps multilingual learners acquire higher language proficiency levels of English. It integrates three key areas, speaking, listening, and grammar, while emphasizing the language of content in math, science, social studies, general knowledge, and biographies, so students gain language skills and subject knowledge. This includes...</p> <ul style="list-style-type: none"> • Providing students opportunities to listen to complex text in the online program and teacher-led lessons • Activating students' background knowledge as valuable resources for their success • Infusing literacy learning with stories, activities, and tasks that represent the students' interests, personal experiences, and language • Helping students understand the uses and purposes of text and the power of text to communicate, convey information, and narrate • Multimedia that provides knowledge and word-rich learning experiences for all students

Oregon's Framework	How Lexia English Addresses the Framework
	<ul style="list-style-type: none"> • Incorporating listening comprehension skills and strategies in each online and offline lesson, which support reading comprehension and writing • Graphic organizers that support students' understanding of text structure and vocabulary • Providing opportunities to engage with text through discussion and peer work in teacher-led lessons • Skill Builders lessons that <ul style="list-style-type: none"> ○ Connect reading and writing to communicate and solve real issues ○ Provide structured opportunities to develop written language skills in various writing genres through oral presentations ○ Language frames that help student generate and organize ideas into written words, phrases, and sentences
<p style="text-align: center;">Section 7: Core Instruction & Assessment</p>	<p>Lexia English supports core instruction by providing multilingual students with necessary listening and speaking practice that address their unique needs. Both the online program and offline teacher-led lessons incorporate several assessment opportunities that personalize student learning and address student progress on lesson learning goals. Lexia English...</p> <ul style="list-style-type: none"> • Provides students with a one-time, adaptive auto placement assessment to determine the correct entry point into the Lexia English program • Personalizes learning through the online program's 2-step branching, which supports individual needs as students progress through levels and content at their own pace • Differentiates instruction with supports and insights for teachers and administrators powered by Lexia's patented Assessment Without Testing® technology • Incorporates responsive, scaffolded instruction that allows students to develop a sense of identity and community along with their language skills • Provides student goal setting and progress tracking worksheets and achievement charts

Oregon's Framework	How Lexia English Addresses the Framework
	<ul style="list-style-type: none"> • Offers opportunities for peer discussion during small group instruction and formative assessment of student progress in teacher-led lessons • Leverages student identity, data use, and teacher expertise to bring educational equity to multilingual students
<p>Section 8: Reaching All Learners</p>	<p>Honoring the lived experiences of students, Lexia English embraces a growth mindset and culturally sustaining and responsive practices that enables multilingual learners' English language and literacy development. Lexia English...</p> <ul style="list-style-type: none"> • Holds an asset-based view of our learners and use their strengths to support academic success, language development, and well-being • Believes that multilingualism is a national resource in an increasingly globalized world and a skill that will continue to grow in demand in the years to come • Strengthens oral language development through explicit connections to reading and writing instruction in Skill Builders lessons • Incorporates receptive, productive, and interactive modalities (e.g., listening, speaking, reading, writing) in online program and offline materials • Allows multilingual students to progress through levels and content at their own pace with Assessment Without Testing® • Invites families to continue literacy development at home with home use letters that explain how students can log in to Lexia English at home

Key Evidence-Based Practices for Oregon's Early Literacy Framework

Lexia English Program Components

Lexia English is comprised of two parts:

- 1) a series of individualized, interactive learning units that students complete independently online; and
- 2) targeted teacher-led lessons designed to provide additional learning support and expansion opportunities with newly learned skills.

The **Online Program** consists of listening, speaking, and grammar units that prepare students to

- Participate in classroom conversations with peers and teachers,
- Listen to stories and conversations and answer questions based on the text, and
- Use and manipulate the target grammar words and phrases used in language frames.

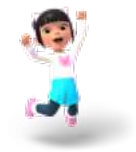
Offline Teacher-led Instruction include the following components.

- **Listening Practice Lessons** prepare students to listen, read, and answer questions about a text, and provide additional opportunities for students to learn the listening skill and sentence frames presented during the online encounters.
- **Speaking Practice Lessons** prepare students to listen, read, and write the sentence frames, and provide additional opportunities for students to apply the sentence frames in written work.
- **Speaking Practice Decks**, a complement to the Speaking Practice Lessons, are designed to engage students in active participation. These lessons include interactive questions and activities based on the target language frames of the lesson, graphic organizers, visual elements, and presentation features.
- **Skill Builders** are designed to help students further engage with content through writing tasks and speaking routines with a focus on oral presentation skills and peer feedback. Graphic organizers related to genre and text structure are included.
- **Hub Resources**, accessible through the Educator Platform (myLexia), offer additional guidance and tools for educators to support student learning, such as parent resources, tools to celebrate student achievement, and teacher guidance and professional learning documents.

The table below identifies Lexia English program components that support key ideas for each section of Oregon’s Early Literacy Framework.

Key Ideas for Oregon’s Early Literacy Framework	Components of Lexia English that Support Oregon’s Early Literacy Framework					
	Online Program	Listening Practice Lessons	Speaking Practice Lessons	Speaking Practice Slide Decks	Skill Builders	Hub Resources
Section 1: Student Belonging – A Necessary Condition for Literacy Learning						
Culturally Responsive Practices	●	●	●	●	●	●
Social Emotional Learning	●	●	●	●	●	●
Section 2: Family & Community Partnerships						
Literacy Starts at Home	n/a	n/a	n/a	n/a	n/a	●
Literacy Learning Before Kindergarten	n/a	n/a	n/a	n/a	n/a	n/a
Supporting Literacy Through Expanded Learning	n/a	n/a	n/a	n/a	n/a	●
Section 3: Oral Language as the Root of Literacy Development						
The Role of Oral Language in Early Literacy Development	●	●	●	●	●	●

Key Ideas for Oregon’s Early Literacy Framework	Components of Lexia English that Support Oregon’s Early Literacy Framework					
	Online Program	Listening Practice Lessons	Speaking Practice Lessons	Speaking Practice Slide Decks	Skill Builders	Hub Resources
An Expansive Perspective of Oral Language	●	●	●	●	●	●
Section 4: Reading Models Based in Research						
Five Models of Reading and the Essential Components of Literacy	●	●	●	●	●	●
Section 5: Foundational Skills						
Overview of Foundational Skills	●	●	●	●	●	●
Instructional Considerations for Foundational Skills	n/a	n/a	n/a	n/a	n/a	n/a
Section 6: Writing, Reading Comprehension, Vocabulary, & Background Knowledge						
Text-Rich Environment and Connect Text	●	●	●	●	●	n/a
Building Background Knowledge and Vocabulary	●	●	●	●	●	●
Reading Comprehension	n/a	●	n/a	n/a	●	n/a
Writing	n/a	n/a	●	●	●	n/a



Key Ideas for Oregon’s Early Literacy Framework	Components of Lexia English that Support Oregon’s Early Literacy Framework					
	Online Program	Listening Practice Lessons	Speaking Practice Lessons	Speaking Practice Slide Decks	Skill Builders	Hub Resources
Section 7: Core Instruction & Assessment						
Supporting Students in Accessing Core Instruction	●	●	●	●	●	n/a
Assessment as an Accelerant for Learning and Prevention	●	●	●	●	●	n/a

Key Ideas for Oregon’s Early Literacy Framework	Components of Lexia English that Support Oregon’s Early Literacy Framework					
	Online Program	Listening Practice Lessons	Speaking Practice Lessons	Speaking Practice Slide Decks	Skill Builders	Hub Resources
Section 8: Reaching All Learners						
Supporting Multilingual Learners	●	●	●	●	●	●
Supporting Students with Reading Difficulties, Reading Disabilities, & Dyslexia	n/a	n/a	n/a	n/a	n/a	n/a
Talented & Gifted Students	n/a	n/a	n/a	n/a	n/a	n/a