

**LETRS PROFESSIONAL
LEARNING SUITE²**



OVER **251,100**
PARTICIPANTS

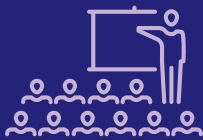


**THE RESEARCH
SPEAKS FOR ITSELF¹**

Collectively, studies have found that teachers who complete Lexia LETRS[®] Professional Learning increase their knowledge of how to deliver science-based reading instruction and their use of high-quality instructional practices based in the science of reading.

**LIVE ONLINE
PROFESSIONAL LEARNING³**

Converting Research to Practice



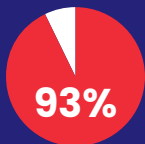
Over **141,100** educators attended a live session.



21,400 live sessions were delivered.



90% agree the content of the session will enhance their ability to use **research-based practices** in their role.



93% indicate that they are able to identify and target the instructional literacy needs of students based on the **science of reading**.

WHAT EDUCATORS ARE SAYING²

90% agree the content is relevant to their professional role and goals.



93% indicate they can apply the skills and concepts learned through LETRS to their work.

91% feel confident delivering instruction to students based on the science of reading.

VOICES OF EDUCATORS²

“ LETRS training provides a comprehensive understanding of the science of reading, covering key aspects such as phonology, phonics, fluency, vocabulary, and comprehension. The program empowered me as a teacher to make informed decisions in [my] instructional practices, ensuring that every one of my students receives the support they need to become proficient readers.”

“ The content reflects what we need to know as educators to support our students. It is important to see how all of it is connected and cycles back to previous connections so we can understand the why.”

1. For more information, visit lexialearning.com/research

2. From LETRS Online Suite license data and unit surveys administered across the 2023-2024 school year.

3. Results from LETRS professional learning session attendance data and survey results for August 1, 2023, through May 25, 2024. Data compiled and analyzed by the Lexia Research team.

Note: Includes usage data of sites available for reporting.