

How does Lexia English support Newcomers?



Lexia® English Language Development™ is an adaptive blended learning speaking and listening program that supports students' English language development through academic conversations. The software is designed to help Emergent Bilingual students in grades K-6 acquire higher language proficiency levels of English. It integrates speaking, listening, and grammar, while emphasizing the language of content in Math, Science, Social Studies, General Knowledge, and Biographies.

While Lexia English is a program designed to support Emergent Bilingual learners across

all proficiency bands in grades K-6, we understand that, particularly for Newcomers, learning academic English can seem challenging and intimidating. Newcomers are not only faced with the task of learning a new culture, they also need to begin the process of learning a new language ([source](#)).

At Lexia, we recognize that Newcomers are already proficient in one or more heritage languages, and their experiences and skill-sets are an important asset in their English learning journey.

“This program has especially benefited my students with the lowest English proficiency. They really love when they can go on this program every day. I think this is because they struggle with a lot of the school day right now, and this gives them the opportunity to feel successful.”

—Teacher, grade 5

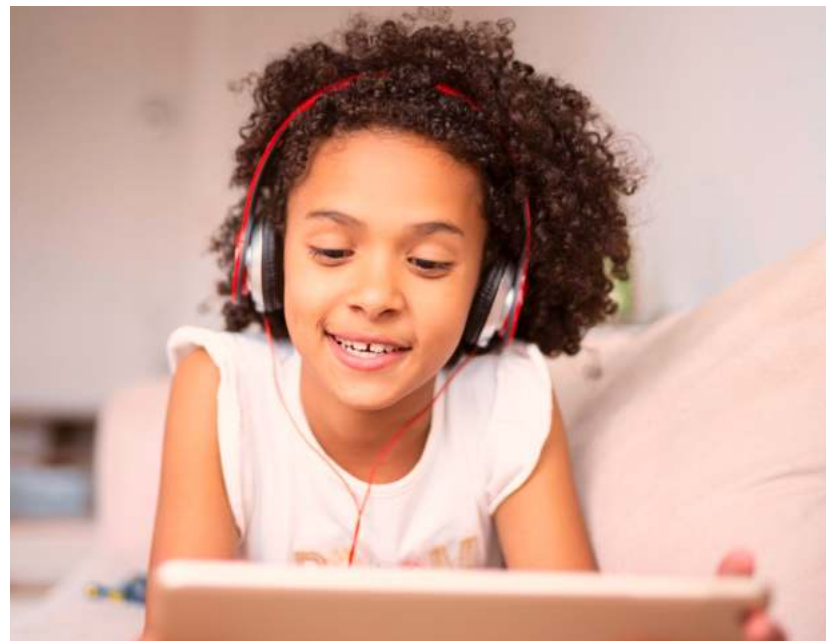
Let's explore how Lexia English supports Newcomers to learn English and become bilingual or multilingual:

- ✘ Speaking practice at the right level, right away: Newcomers start practicing speaking and listening without delay, in a safe, non-judgmental environment
- ✘ Auto-placement identifies the appropriate entry point for each student
- ✘ Purposeful repetition with embedded grammar instruction
- ✘ High-level of engagement and focus, fostered by one-on-one targeted practice
- ✘ Speech Recognition Technology trained to recognize phoneme blends (accents)
- ✘ Gradual release of responsibility
- ✘ Ongoing progress monitoring data to track progress and identify gaps
- ✘ *Getting Started, Onboarding, and School-to-Home* resources and videos
- ✘ Targeted, teacher-led Lexia Lessons®
- ✘ At-home practice & student success celebration
- ✘ Cultural responsiveness

In Lexia English, Newcomers are provided with multiple opportunities to acquire and practice speaking and listening skills in a safe, non-judgmental environment: purposeful repetition and extensive speaking practice at the right level, along with listening practice, are at the core of the software. At Lexia, we know how vital speaking practice is; that's why we don't wait to have the learner start speaking right away. Lexia English's dynamic immersion approach keeps students engaged and helps them avoid the "silent period", as they're exposed to the language in a natural environment and practice their oral English from day one.

In addition, to place Newcomers at the correct entry point into the program, Lexia English offers an auto-placement tool which determines the correct starting level for each student by assessing learners' receptive

and productive language skills. Students are placed at the right level to ensure an optimal learning experience, regardless of their level of language proficiency, and subsequently start using the program instantly.



At the same time, the embedded Speech Recognition Technology provides immediate feedback, helping students build linguistic confidence in academic English. Students work independently, at their own pace, following individualized learning paths made available by the combination of student-led online learning and teacher-led resources for in-classroom application.

The program also offers embedded and explicit scaffolded grammar instruction that enables users to have conversations about different subject matters. Language frames provide learners with portable language that helps them make sense of—and properly use—grammatical conventions in conversation and academic discussion, including, but also going beyond, foundational sentence-starters. While these frames are used throughout the program with increasing levels of complexity

across a variety of contexts and subject matter topics, they best support the needs of Newcomers because they start at a level easily accessible to someone who has little experience with English.

In addition, both the online and teacher-led, offline Lexia Lessons® follow the Gradual Release of Responsibility Model. This instructional approach involves the gradual shifting of responsibility for learning from the teacher to the student and follows the format “I do, we do, you do.” In the online component of Lexia English, the student interacts with the characters one-on-one in a variety of Units. In Speaking Units, the character starts by modeling the targeted skill (I do). The student then repeats the same phrase together with the character (We do), and finally students have the opportunity to practice the same speaking skill on their own (You do).

The online exercises take the following formats:

- ✗ **I Say it** (the character models)
- ✗ **Say it with me** (the student says the phrase with the character)
- ✗ **Say it after me** (the student says the phrase independently)
- ✗ **Say the answer** (the student repeats the phrase independently)
- ✗ **Say it one more time** (the student practices the phrase one more time).

This purposeful repetition supports a Newcomer who is just getting started with academic English, as well as a student who is learning more complex sentence structures. The learner practices one-on-one with the program’s characters, as Lexia English is designed to lay the foundation for speaking in a safe environment that will allow the learner to achieve fluency and automaticity with the English language.

The targeted, educator-led Lexia Lessons® are meant for small groups of students or one-on-one practice. Both the speaking and listening lessons also follow the Gradual Release model.



The educator starts by modeling (I do), then practices with the students (We do), and lastly students practice either individually or in pairs (You do).

The myLexia® Educator Platform offers real-time progress monitoring of student performance and language proficiency, providing educators with actionable data

to support student achievement in a personalized way. It empowers educators to address individual needs and provide further support for Newcomers when and where they need it.

Moreover, additional at-home practice of speaking and listening skills using the online component of Lexia English, further reinforces learning achieved in the classroom. The program's *Getting Started*, *Onboarding*, and *School-to-Home* resources, some of which are translated in additional languages, enable Newcomers to access and work on the program remotely.

Finally, the program's 17 characters celebrate students' successes in English as well as in their heritage languages. Printable student achievement certificates are available for educators to share with their students and their families to celebrate important milestones.

Tips for using Lexia English with Newcomers:

When working with Newcomers, we recommend starting with targeted onboarding or pre-teaching activities, such as showing the *Getting Started* and *Onboarding* videos to the entire class. In addition, deliver a few teacher-led Lexia Lessons, with a focus on the Speaking ones. The videos and lessons provide all students with basic background information about Lexia English and how to begin using it.

It is also important for educators to introduce and model the Lexia English online program to students, prior to asking them to work independently.

We suggest that educators follow the steps below:

- ✘ Model for students the proper way to sit at the computer and how to properly wear a headset with a microphone.

- ✘ Introduce students to the various microphone statuses.
- ✘ Introduce and practice the calibration warm-up process.
- ✘ Introduce students to the Lexia English characters who will help them navigate through the program's activities by modeling various activities for the whole class.
- ✘ Have students practice wearing the headset correctly, counting from 1-5 according to the instructions, and demonstrating how to use the microphone button.
- ✘ Once the above steps have been completed, have students complete the Placement Tool so that they can move on with the online portion of the program.

How do other educators feel about Lexia English?

"I believe all ELL students need to use this program starting in kindergarten, because I know that correct oral language, listening skills, and vocabulary are such major indicators of future success in reading and writing and all subsequent areas. This is what is lacking in our public school programs."

—ESL Specialist

"My students love Lexia English and it is helpful for practicing their English skills during independent practice time."

—Teacher, K

Targeted support and resources

A variety of resources in the program's Resources Hub empower you to deliver personalized instruction and to engage Newcomers' families:

- ✘ Home Use Letters*
- ✘ Guide to Lexia English Buttons and Computer Readiness
- ✘ Achievement certificates & animations
- ✘ How to Use a Tablet poster
- ✘ Placement guidance
- ✘ Reporting capabilities at the student, class, grade, school, and district level
- ✘ Independent, student-driven learning video
- ✘ Getting Started with Lexia English video*
- ✘ Onboarding and auto-placement video*
- ✘ Ongoing data to monitor progress video
- ✘ Teacher-led instructional resources video

**also translated in additional languages*

Empower your Newcomers to Thrive

Aiming to instill confidence in Emergent Bilingual learners and embracing an asset-model mindset, Lexia English creates a more inclusive classroom for all.

[Learn how it can help your students](#)

Lexia®

Lexia®, a Cambium Learning Group company, is a leader in science of reading-based solutions. For 40 years, the company has focused on pre-K–12 literacy and today provides solutions for every student and educator. With a complete offering of professional learning, curriculum, and embedded assessment, Lexia helps more learners read, write, and speak with confidence. For more information, visit lexialearning.com.



© 2023 Lexia, a Cambium Learning® Group company. Lexia®, Aspire™, and other trademarks, names, and logos used herein are the property of Lexia and/or its subsidiaries, and are registered and/or used in the United States and other countries. Additional trademarks included herein are the property of their respective owners.