

How does Lexia English support LTELs?



Long-Term English Learners (LTELs) are students who have been enrolled in United States schools for more than five or six years* without reaching the levels of English proficiency needed to be reclassified. Although English tends to be the language of preference for these students¹, the majority are not usually offered the type of instruction needed to help accelerate their learning and advance beyond intermediate levels of English oral proficiency.

Lexia® English Language Development™ is an adaptive blended learning speaking and listening program that supports students' English language development through academic conversations. The program is designed to help Emergent Bilingual students in grades K–6 acquire higher language

proficiency levels of English. It integrates speaking, listening, and grammar, while emphasizing the language of content in Math, Science, Social Studies, General Knowledge, and Biographies.

Lexia English is a program developed for Emergent Bilingual learners across all proficiency bands. At Lexia, we understand that most classroom settings are missing a crucial element to empower LTELs to achieve academic success: oral language practice beyond the early grades, with a focus on comprehension of the language in a structured way. Lexia English was designed to help.

“I love the speaking practice my students are getting. They are less hesitant to speak when using the program. It is a confidence booster for them to see that they are making gains in the English language.”

—ESL Teacher, grades K, 1, 2, 3, 5

**Definitions vary among districts*

Let's explore how Lexia English can help educators meet the unique needs of LTELs

Lexia English provides learners with opportunities for extensive speaking and listening practice that spans the curriculum and contains embedded grammar instruction. Learners practice their skills in a safe, nonjudgmental environment; purposeful repetition and speaking and listening practice at the right level are at the core of the software.

Thanks to this focus on oral language development, Lexia English supports LTELs by bringing their academic English to the level it needs to be through targeted speaking and listening activities and teacher-led lessons and resources.

Due to time and resource constraints, it's rare that students in grades 4 and beyond are given ample opportunities to focus on creating sentences and practicing speaking in a structured way. Lexia English provides that space with its embedded, powerful speech recognition technology, which helps each learner progress linguistically and academically at their own pace.

In Lexia English, intrinsic motivation is encouraged by offering choice, allowing students to see their progress, and celebrating learners' achievements as Emergent Bilinguals. The program and its curriculum were founded on and designed from an asset-based orientation toward learners and learning. All students bring academic, socioemotional, and cultural strengths

that can be harnessed in strategic ways to help cultivate their understanding of both language and content.

In Lexia English, multilingualism is valued and seen as a resource and talent. Therefore, it is the goal of the software to empower all LTELs to actualize their gifts and strengths, and to facilitate teachers in building learning around students' existing capabilities and knowledge.

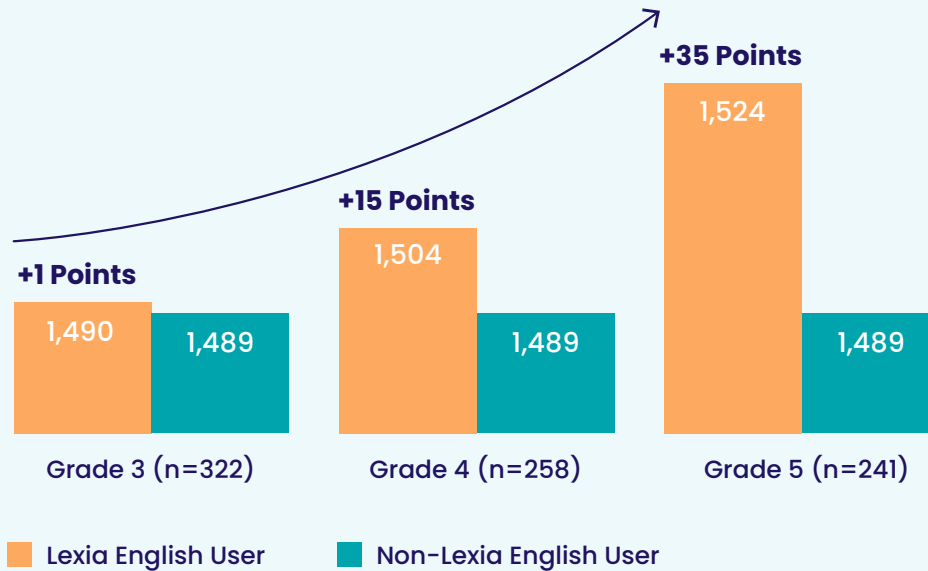


Emergent Bilinguals using Lexia English are better prepared for the academic rigors of 4th grade and beyond

Results from a 2020–2021 Lexia English study showed that learners who used the program scored higher on a state language proficiency test than students who did not use Lexia English, even in hybrid and remote learning environments. The same study revealed that Lexia English users not only scored higher than their peers in every grade, but also tended to have **successively higher average scores in grades 3–5 while their peers plateaued**. These excellent results are in line with the program’s goals, as Lexia English was

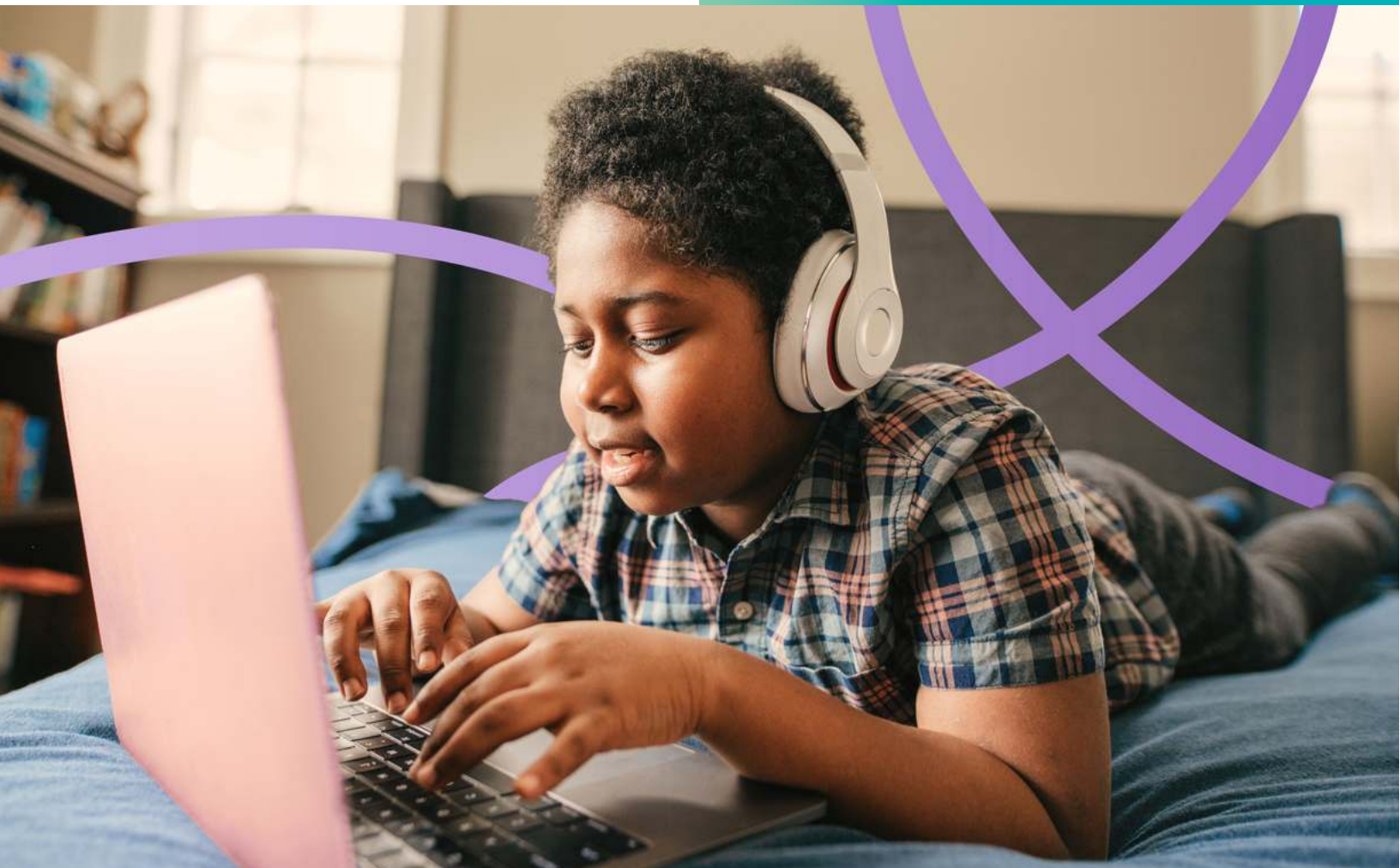
created to help LTELs get over that “hump” to proficiency.

By 4th grade, academic English becomes central to students’ reading and writing, and the focus of instruction traditionally shifts away from oral language development. Instead, the main focus in upper grades has been vocabulary and possibly morphology, while grammar, speaking, and listening have taken a back seat to reading non-fiction and text-based materials.



In reality, however, that is exactly when learners need more academic conversation instruction and practice, because without oral comprehension of the language, students are not able to comprehend text. When students are focused and engaged in speaking academic English in a structured way, their comprehension skills also improve—which, in turn, will help them be successful when they encounter increasingly demanding texts. The focus on academic English also translates into stronger written communication skills. Learners must be able to speak complex sentences in order to be expected to write in complex and grammatically correct sentences.

By 4th grade, the focus of instruction traditionally shifts away from oral language development. In reality, however, that is exactly when learners need more academic conversation instruction and practice.



How Lexia English does it

To ensure that every learner is placed at the correct entry point into the program, Lexia English starts with an auto-placement tool that determines the correct starting level by assessing learners' receptive and productive language skills. LTELs are placed at the level that corresponds to their English proficiency.

While using the program, students are offered immediate, guided feedback thanks to the embedded Speech Recognition Technology, which helps them build linguistic confidence in academic English. All students work independently and at their own pace, following individualized learning paths made available by the combination of student-led online learning and teacher-led resources for in-classroom application.

In addition, Lexia English offers explicit scaffolded grammar instruction that enables learners to have conversations about different subject matters at school and beyond. Language frames with increasing levels of complexity provide learners with portable language that helps them make sense of—and properly use—grammatical conventions in conversation and academic discussion in multiple subject areas, including but also going beyond foundational sentence-starters.

The program's online and teacher-led, offline Lexia Lessons® follow the Gradual Release of Responsibility Model. This instructional approach involves the gradual shifting of responsibility for learning from the teacher to the student and follows the format "I do, we do, you do." In the online component of Lexia English, the student interacts with the characters one-on-one in a variety of Units. In Speaking Units, the character starts by modeling the targeted skill (I do). The student then repeats the same phrase together with the character (We do), and finally students have the opportunity to practice the same speaking skill on their own (You do).

The online exercises take the following formats:

- ✕ I say it (the character models)
- ✕ Say it with me (the student says the phrase with the character)
- ✕ Say it after me (the student says the phrase independently)
- ✕ Say the answer (the student repeats the phrase independently)
- ✕ Say it one more time (the student practices the phrase one more time)

The targeted, educator-led Lexia Lessons are meant for small groups of students or one-on-one practice. Both the speaking and listening lessons also follow the Gradual Release model. The educator starts by modeling (I do), then practices with the students (We do), and lastly students practice either individually or in pairs (You do).

Moreover, Lexia Skill Builders®, the program’s newest instructional resources, promote generalization and expand expressive language by providing new ways for students to engage with content from the online student application. Learners plan and draft a presentation script using the language

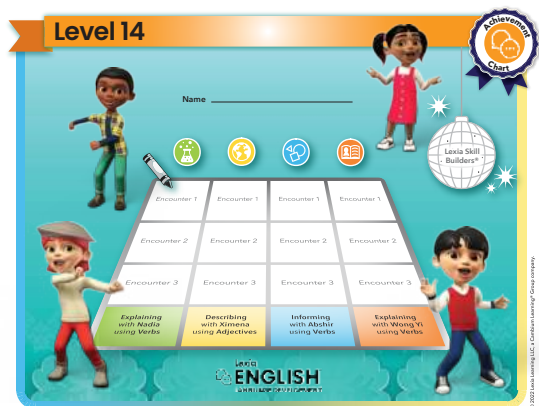
and grammar they have learned in the student component of Lexia English, and they then have multiple opportunities to share their ideas and practice with peers before presenting to an audience—a unique model of using writing in the service of speaking.

The myLexia® Educator Platform offers real-time progress monitoring of student performance and language proficiency, providing educators with actionable data to support student achievement in a personalized way. It empowers educators to address individual needs and provide further support for LTELs when and where they need it.

Lexia Skill Builders promote generalization and expand expressive language by providing new ways for students to engage with content from the online program—a unique model of using writing in the service of speaking.

Furthermore, additional at-home practice of speaking and listening skills using the online component of Lexia English reinforces learning achieved in the classroom. The program’s Getting Started, Onboarding, and School-to-Home resources—some of which are translated in additional languages—enable LTELs to access and work on the program remotely. Finally, the program’s 17 characters celebrate students’ successes in English as well as in their heritage languages. Printable student achievement certificates are available

for educators to share with students and their families to celebrate important milestones.



Tips for using Lexia English with LTELs

- ✘ The fact that English grammar still needs to be taught to LTELs is often overlooked. Usually, the hallmark of an LTEL is that they can understand everything in class and can make themselves understood. However, as a result of the lack of targeted grammar instruction, they make grammar mistakes that impede them from advancing to the next proficiency level. The grammar structure within Lexia English grows in depth and breadth for that reason—which makes using the teacher-led lessons and instructional resources with LTELs even more imperative.
- ✘ Always make sure to use the instructional materials! Because Lexia English uses a balanced approach, both online and teacher-led engagement is crucial for success. The online platform gives learners an opportunity to practice their academic English in a safe space and the time to build their confidence, while the instructional materials give students a chance to practice the skills they learned with their peers. This is when mastery happens and students start to own the language.
- ✘ The language frames used in Lexia English are meant to be portable. Finding ways to use them in any and all areas of class will give LTELs even more opportunities to practice and enhance their speaking and listening skills.
- ✘ Finally, encourage your LTELs to use the language frames they learn in Lexia English in their writing. After all, they are expected to not only read but produce academic English. Studies show that students remember more when they write things down on paper themselves², so it is important to give them opportunities to apply their newly formed grammar structures in various writing activities throughout the day.



“I like that there are diverse avatars in the program. I also like that the program covers multiple levels and multiple subject areas. The best part is that it not only helps the student with general conversational words, it helps with academic language too.”

—ESL Teacher

“The program is kid-friendly with its characters and visuals. The app finds creative ways to provide ELLs with the repetition they need. It embeds lots of positive feedback for the students, and the learning Resources Hub provides lots of helpful information for teachers with slide decks, lessons, extensions, etc.”

—Interventionist/Specialist

Empower your LTELs to thrive

Aiming to instill confidence in Emergent Bilingual learners and embracing an asset-model mindset, Lexia English creates a more inclusive classroom for all.

Learn how it can help
your students

Sources

1. <https://californianstogether.org/meeting-the-unique-needs-of-long-term-english-language-learners/>
2. <https://www.sciencedaily.com/releases/2021/03/210319080820.htm#:~:text=A%20study%20of%20Japanese%20university,the%20information%20an%20hour%20later>

Lexia®

Lexia®, a Cambium Learning Group company, is a leader in science of reading-based solutions. For 40 years, the company has focused on pre-K–12 literacy and today provides solutions for every student and educator. With a complete offering of professional learning, curriculum, and embedded assessment, Lexia helps more learners read, write, and speak with confidence. For more information, visit lexialearning.com.



© 2023 Lexia, a Cambium Learning® Group company. Lexia®, Aspire™, and other trademarks, names, and logos used herein are the property of Lexia and/or its subsidiaries, and are registered and/or used in the United States and other countries. Additional trademarks included herein are the property of their respective owners.