

## School-To-Home Connection

This document is for parents and guardians who have received notification from their school that *Lexia Reading* can be used at home. (International users will see *Lexia Reading* as *Lexia Reading UK*).

### 1. Can your computer run *Lexia Reading*?

#### System Requirements

##### Macintosh

- Mac OS X 10.3-10.5
- At least 256 MB of RAM
- At least 500 MB hard drive space
- Speakers or headset (headset recommended)
- 32 MB accelerated video graphics card or better

##### Windows

- Windows 2000, XP SP4, Vista
- At least 256 MB RAM
- At least 500 MB hard drive space
- Speakers or headset (headset recommended)
- 32 MB accelerated video graphics card or better

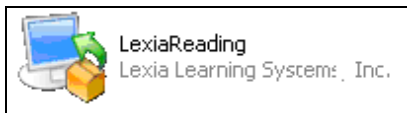
### 2. Download Student Software

<http://www.lexialearning.com/support/lexiareading/license.html>

### 3. Install & Configure

#### Windows

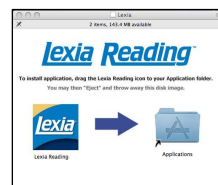
**Double-click** on the downloaded Lexia Reading.exe that you downloaded to your Desktop.



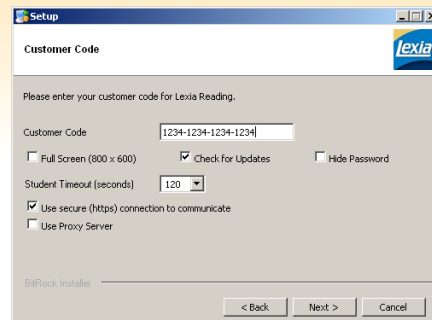
You may receive a warning message from Windows, saying the publisher of the software is unknown. This is normal, and it is safe to click **OK** to continue with the install.

#### Macintosh

**Double-click** on the downloaded Lexia (or Lexia UK) volume to begin. Drag and drop the Lexia icon from the left to the Applications folder on the right to install.



Follow the screen prompts until you get to the Customer Code Screen.



- Type in the **customer code** you received from the school; include dashes.

\_\_\_\_\_ - \_\_\_\_\_ - \_\_\_\_\_ - \_\_\_\_\_

Accept other settings (no changes recommended) by clicking **Next**. Follow the screen prompts to continue the installation. Click **Finish** to complete.

### Do you filter content on your home computer?

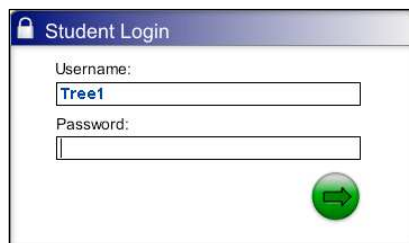
Please configure all content-filtering software, firewalls, and browsers on your home systems to allow access to *student.mylexia.com* and *update.lexialearning.com* via SSL (port 443).

## 4. Student Software Use

**Double-click** on the *Lexia Reading* icon on your desktop to launch the software.



Your child will need to type in their username and password to start.



Username: \_\_\_\_\_

Password: \_\_\_\_\_

*Lexia Reading* is intended for independent practice by the student with no assistance from parents or siblings. Please allow your child to work in the program at their own pace without assistance.