

Installation & Configuration

Lexia Reading requires that the student software be installed and configured prior to initial use. **The student software should be installed on each student machine and not run off a central server due to the large number of graphic and sound files.** The student software download instructions and the customer code (required to configure the student software) are provided by Lexia via an email confirmation when the product is delivered.

Note: Each student machine that will have the Lexia Reading student software on it must meet the system requirements in the table below. If the machines do not meet these requirements, Lexia Reading should not be installed.

System Requirements

Macintosh

- Mac OS X 10.3+
- At least 256 MB of RAM
- At least 500 MB hard drive space
- Speakers or headset (headset recommended)
- 32 MB accelerated video graphics card or better

Windows

- Windows 2000, XP SP2, Vista
- At least 256 MB RAM
- At least 500 MB hard drive space
- Speakers or headset (headset recommended)
- 32 MB accelerated video graphics card or better

WINDOWS STUDENT SOFTWARE INSTALLATION

1. Download the Windows version of the student software to the Windows machine you wish to install Lexia Reading on.
2. During the download, when prompted whether to Run or Save, choose Save and select a destination, such as your Desktop.
3. Double-click on the downloaded Lexia Reading.exe to start the installation.

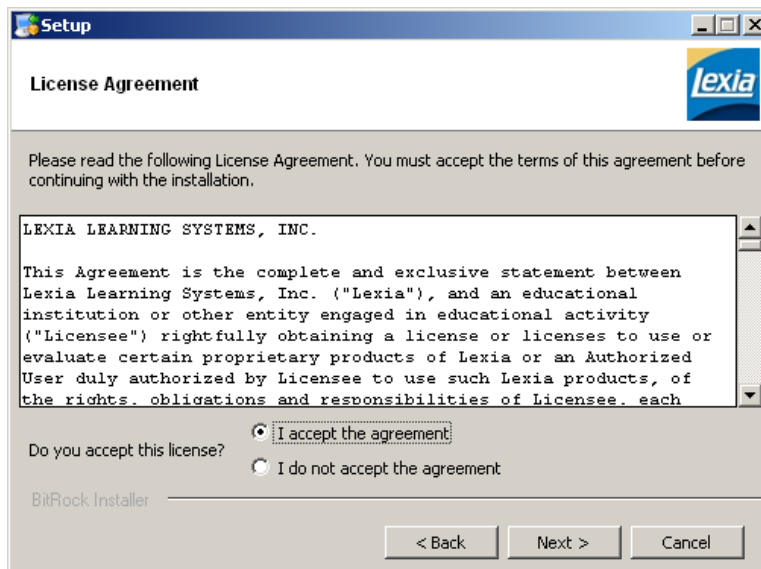


4. Click on the Run button to launch the installation program.

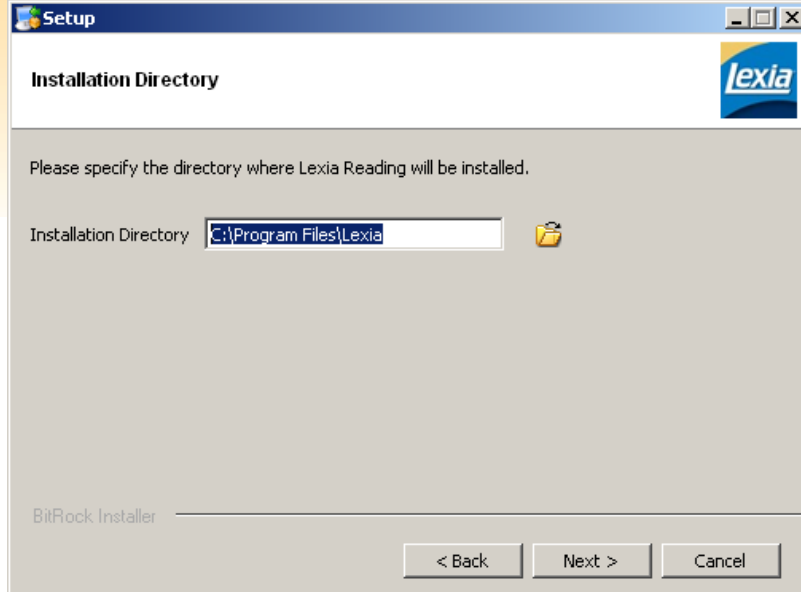
You may receive a warning message from Windows, saying the publisher of the software is unknown. This is normal, and it is safe to click OK to continue with the install.



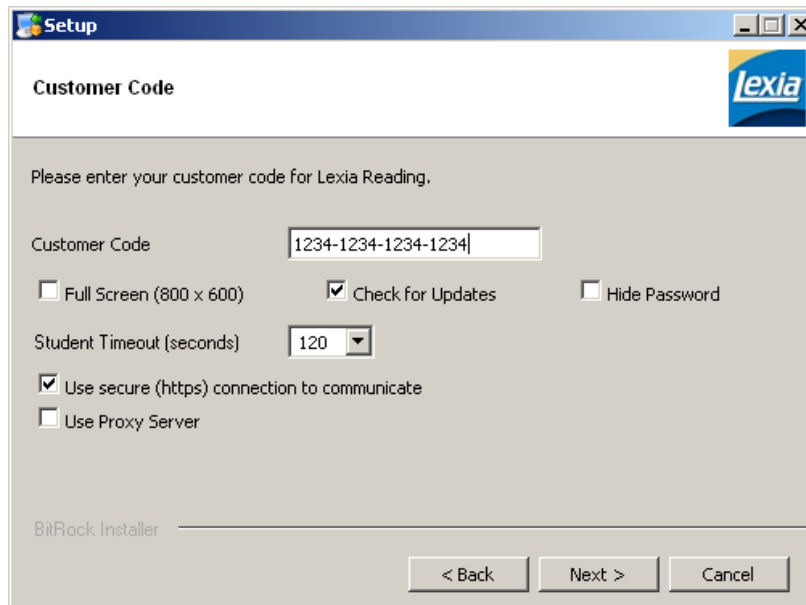
5. Click the Next button.



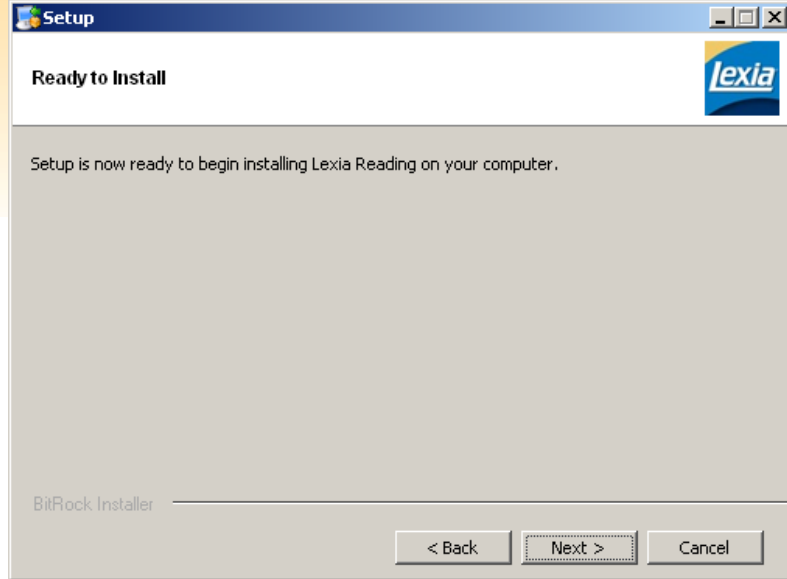
6. Read the terms of the license agreement, and click "I accept the agreement." If you do not accept the license agreement, the installation will not proceed. Click the Next button.



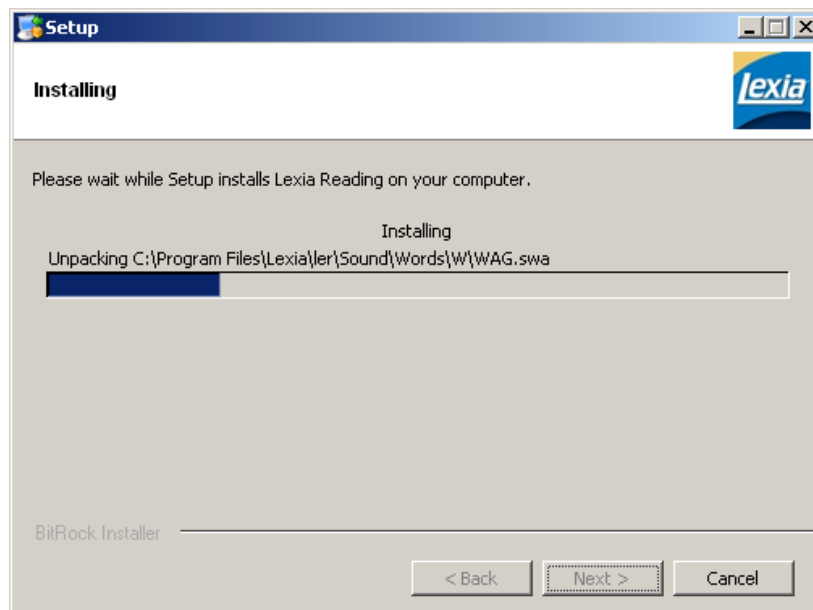
7. *Lexia Reading* will be installed into C:\Program Files\Lexia (C:\Program Files\Lexia Reading UK) by default; this location is strongly recommended. (If you wish to select a different location click the folder and select a different location. Click the OK button to select this location) Click the Next button.



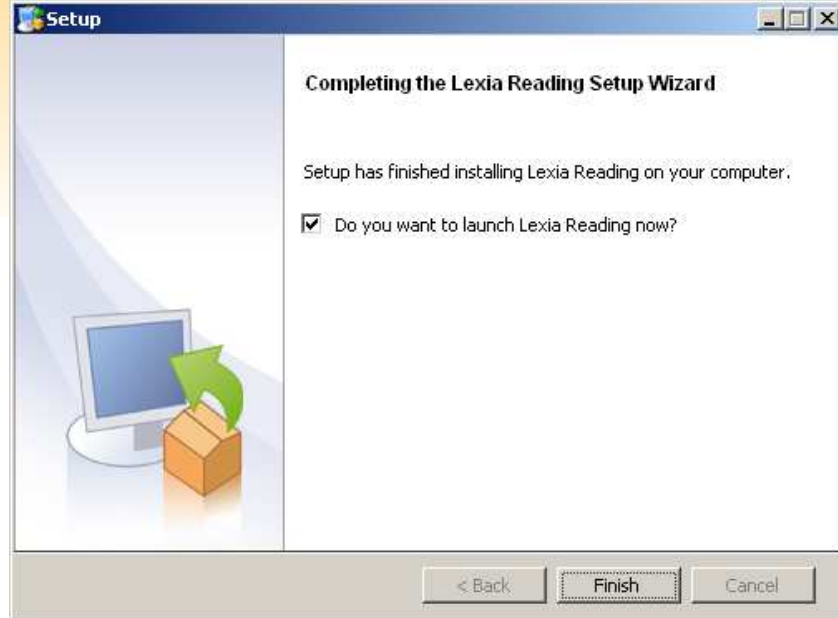
8. Enter your customer code (this was emailed by the Lexia Order Department to the main Lexia contact for your school or district). Select the configuration options you wish on the screen. See the Configuring *Lexia Reading* section in this document for more information on the configuration options available). Click Next.



9. Setup is now ready to install *Lexia Reading* student software on the machine. Click Next to continue with the installation.



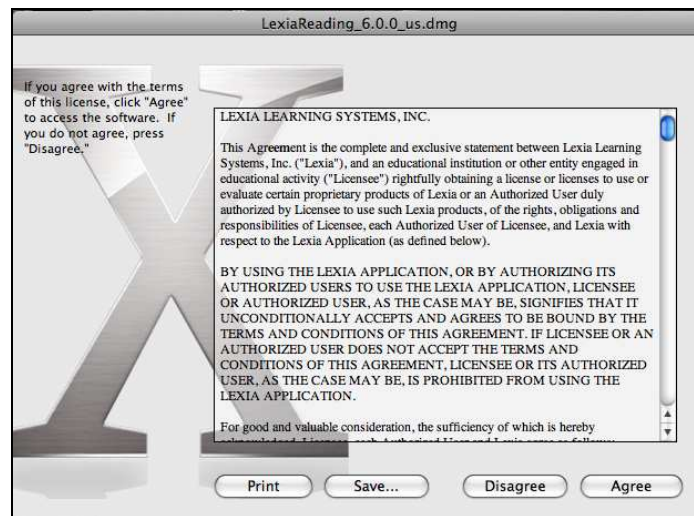
10. You will see a progress bar move across the screen as the installation proceeds. Lexia Reading will create a program group and shortcuts for the application.



11. When you see a message that installation is complete, click on the box labeled "Do you want to launch Lexia Reading now?" and click the Finish button.
12. Go to the *Configuring Lexia Reading* section in this document for instructions on how to configure the *Lexia Reading* application. This will need to be done prior to distributing the installation to other student machines.

MACINTOSH STUDENT SOFTWARE INSTALLATION

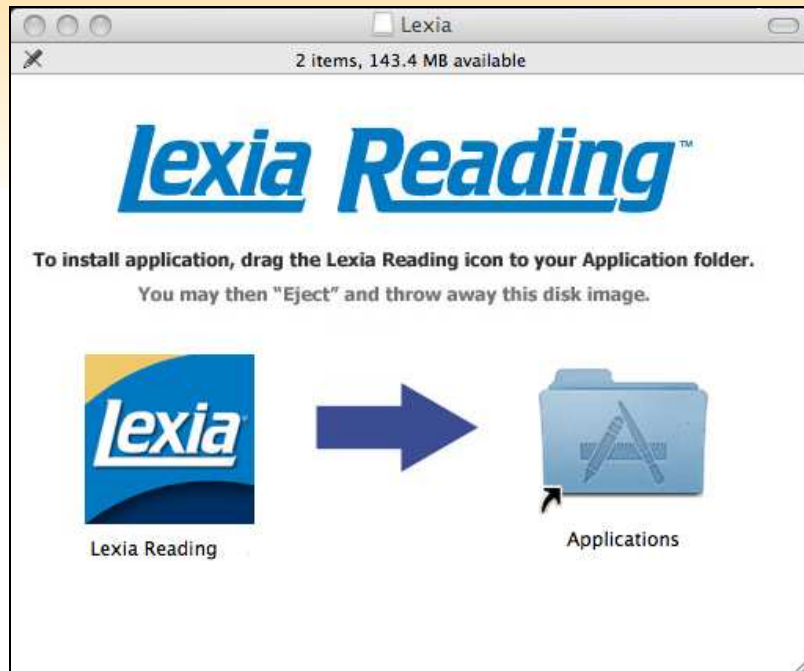
1. Download the Macintosh version of the student software to the Macintosh student machine you wish to install *Lexia Reading* on.



2. Read the terms of the license agreement, and click "Agree." If you do not accept the license agreement, the installation will not proceed.



3. Double-click the Lexia volume on the Desktop to open it if it does not open automatically.



4. A window will open on the screen. Simply drag and drop the Lexia Reading (Lexia Reading UK for UK versions) icon from the left to the Applications folder on the right of the window. This will install the Lexia Reading student software as Lexia Reading (Lexia Reading UK for UK versions) under Applications.
5. Go to the Configuring *Lexia Reading* section in this document for instructions on how to configure the *Lexia Reading* application. This will need to be done prior to distributing the installation to other student machines.

Configuring Lexia Reading

1

You will need your unique customer code available to configure the installed software prior to initial use.

THIS STEP MUST BE COMPLETED PRIOR TO DISTRIBUTING THE LEXIA READING STUDENT SOFTWARE TO YOUR OTHER MACHINES.



1. Double-click on the Lexia Reading icon to launch the product. If Lexia Reading is not yet configured, the settings screen will display.

NOTE: To bring up the settings screen at a later date to change any of the settings, after you double-click on the Lexia Reading icon, hold down the “A” and the “S” keys until the configuration screen is displayed.

A screenshot of the Lexia Reading configuration settings window. The window has a blue title bar with the Lexia logo and the tagline "Our World Begins with Reading®" on the left, and a red "STOP" button on the right. The main content area is yellow and contains three sections: "General Settings", "Advanced Settings", and "Proxy Settings".
- **General Settings:** Includes a "Customer Code" text box with the value "1234-1234-1234-1234" and a "Product Updates" section with an "Install Update" button.
- **Advanced Settings:** Includes a "Server URL" text box with "https://student.mylexia.com", "Additional Options" with checkboxes for "Full Screen (800 X 600)", "Hide Password", and "Check for Updates" (checked), and a "Student Timeout (Seconds)" dropdown menu set to "120".
- **Proxy Settings:** Includes four text boxes for "Proxy Address", "Proxy Port", "Proxy User", and "Proxy Password".
At the bottom right of the settings area are "Save" and "Cancel" buttons.

2. Make changes to the Settings Screen if needed.

General Settings

- Customer Code - Enter your customer code into the space provided.
- Product Updates - This button will be clickable if any updates are available.

Advanced Settings

- Server URL - should not be changed (<https://student.mylexia.com>)
- Full Screen (800 x 600) – check if you want to change your screen resolution to 800 x 600. Otherwise, Lexia Reading will use your default screen resolution and put a black border around the application to hide the desktop.
- Check for Updates – leave checked if you want an icon to appear on the login screen when student software updates are available.
- Hide Password – the default setting is for the student password to be displayed during entry; check this option is you want to obscure the password during entry.
- Student Timeout (Seconds) – leave at 120 seconds unless your student software gets timeout messages while running on your network.

Proxy Settings

Use these settings only if your school accesses the Internet through a proxy server. If your school uses a proxy server and you do not set these settings, you will be unable to access the Lexia Reading database on the Internet and you will get an error when you try to run the student software.

Proxy Address – IP address of your school proxy server. (required)

Proxy Port – Port used to access the proxy server. (required)

Proxy User – This is the username requested by the proxy server. (optional)

Proxy Password – This is the password for the username entered. (optional)

3. Click Save. Your installation is now configured for use and may be distributed to other machines as needed.

Windows Vista Ultimate users may need to reconfigure their configuration settings to overcome old settings being saved in shadow files. The best way to do this is to double-click on the Lexia Reading icon, hold down the “A” and the “S” keys until the configuration screen is displayed. Make sure the server URL is: <https://student.mylexia.com>. Save your changes.