



ACT® Aspire®  
(ACT Aspire)



State  
Arkansas



School Year  
2020 - 2021



Grade  
6



# of Students  
1,078 Students with Consistent Use\*\*



Implementation  
Hybrid

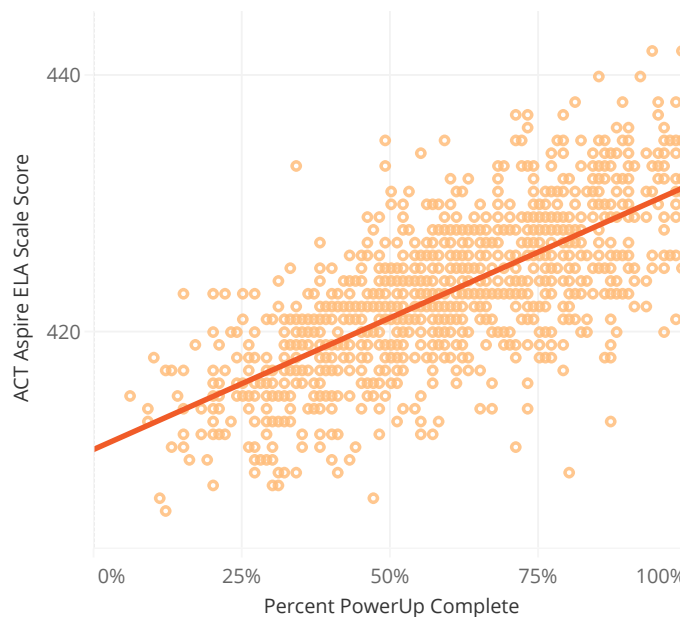
## Strong Correlation between PowerUp Completion and ACT Aspire ELA Scale Scores

Students who were further along in PowerUp were likely to have higher ACT Aspire ELA Scores.

- The correlation between students' percent completion in Lexia® PowerUp Literacy® (PowerUp) and their ACT Aspire ELA scale scores shows a strong, positive, statistically significant relationship between PowerUp and ACT Aspire ELA.

- When students have a higher percent of PowerUp complete, they tend to also score higher on ACT Aspire ELA.

Correlation between Percent PowerUp Complete and ACT Aspire ELA Scale Scores



The correlation between percent of PowerUp complete and ACT Aspire ELA scale scores is

**.72\***

Pearson's r

(N = 1,078)

This indicates a strong positive relationship between PowerUp and ACT Aspire ELA.

\*  $p < 0.001$

Correlation Ranges:

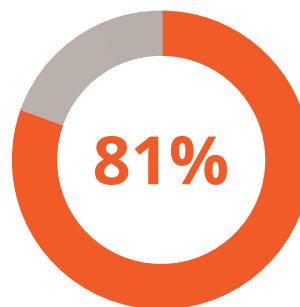
Low = .1 - .2, Medium = .3 - .4, High = .5 - .6, Very High = .7 - .9

## PowerUp Zones Aligned Well With ACT Aspire ELA Proficiency

Students' end-of-year Zone in PowerUp is a good indicator of their reading proficiency.

- The majority of students (81%) who finished the school year working in Advanced Zone skills across all Strands in PowerUp also were proficient on ACT Aspire ELA.

- These results demonstrate a strong alignment between PowerUp Zones and ACT Aspire ELA Performance Levels. Working through PowerUp material prepares students to perform well on ACT Aspire ELA.



Overall, **81% (N = 116)** of Students with Consistent Use who finished the school year working in Advanced Zone skills across all Strands in PowerUp were proficient on ACT Aspire ELA.

\*\*Students with Consistent Use are students who have used PowerUp for 20 or more weeks during the school year.